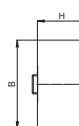
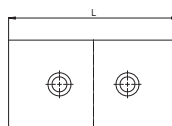




### Coppia ganasce tenere per morse a 5 assi

Coppia ganasce in acciaio non trattate, tenere lavorabili, per bloccare pezzi irregolari su morse a 5 assi, fornite con relative viti di bloccaggio.

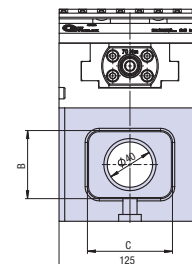
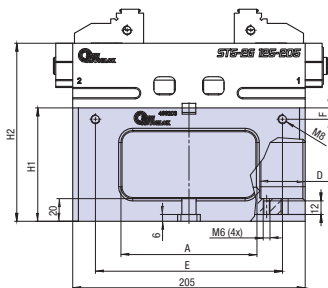
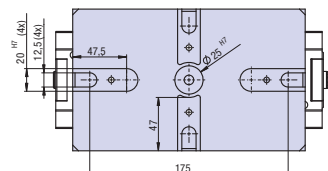


Codice	€	L (mm)	B (mm)	H (mm)
C553960124	---	124,8	65	36,2



### Rialzo per morse a 5 assi

Rialzo per morse a 5 assi, con predisposizione per cave a T e sistema Zero Point APS.

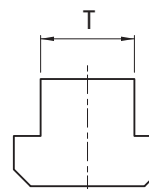


Codice	€	H1 (mm)	H2 (mm)	A (mm)	B (mm)	C (mm)	D (mm)	E (mm)	F (mm)
C553980060	---	60	117	120	40	70	29/16	145	20
C553980100	---	100	157	120	60	75	40	165	10
C553980120	---	120	177	120	75	75	40	165	20



### Staffa per morse a 5 assi

Staffa in acciaio per lo staffaggio delle morse a 5 assi e relativi rialzi. Fornita con tassello e vite.



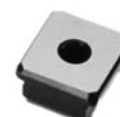
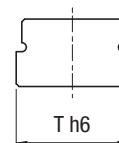
Codice	€	T (mm)
C554020012	---	12
C554020014	---	14
C554020016	---	16

Codice	€	T (mm)
C554020018	---	18
C554020020	---	20
C554020022	---	22



### Coppia di chiavette di posizionamento per morse a 5 assi

Coppia di chiavette di posizionamento in acciaio temperate e rettificata per uso su cave a T (dimensioni speciali) per morse a 5 assi.



Codice	€	T (h6) (mm)
C554040012	---	12
C554040014	---	14
C554040016	---	16

Codice	€	T (h6) (mm)
C554040018	---	18
C554040020	---	20
C554040022	---	22