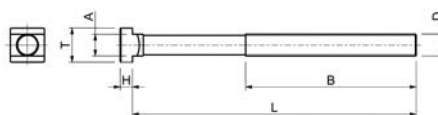




Vite per cave a T



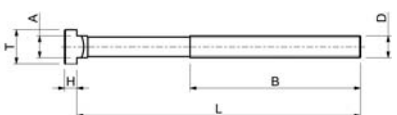
Vite per cave a T, in acciaio 42CrMoS4, **classe 10.9**, filettatura rollata.

Codice	€	D	L (mm)	B (mm)	A (mm)	T (mm)	H (mm)	Cava (mm)
C601100005	---	M10	40	30	9,7	15	6	10
C601100010	---	M10	63	45	9,7	15	6	10
C601100015	---	M10	80	55	9,7	15	6	10
C601100020	---	M10	100	60	9,7	15	6	10
C601100025	---	M10	125	75	9,7	15	6	10
C601100030	---	M10	150	100	9,7	15	6	10
C601100035	---	M10	170	100	9,7	15	6	10
C601100040	---	M12	50	35	11,7	18	7	12
C601100045	---	M12	63	45	11,7	18	7	12
C601100050	---	M12	80	55	11,7	18	7	12
C601100055	---	M12	100	60	11,7	18	7	12
C601100060	---	M12	125	75	11,7	18	7	12
C601100065	---	M12	150	100	11,7	18	7	12
C601100070	---	M12	170	100	11,7	18	7	12
C601100075	---	M12	200	120	11,7	18	7	12
C601100080	---	M14	63	40	13,7	22	8	14
C601100085	---	M14	80	55	13,7	22	8	14
C601100090	---	M14	100	65	13,7	22	8	14
C601100095	---	M14	125	75	13,7	22	8	14
C601100100	---	M14	150	100	13,7	22	8	14
C601100105	---	M14	170	100	13,7	22	8	14
C601100110	---	M14	200	125	13,7	22	8	14
C601100115	---	M14	230	150	13,7	22	8	14
C601100120	---	M16	63	45	15,7	25	9	16
C601100125	---	M16	80	55	15,7	25	9	16
C601100130	---	M16	100	63	15,7	25	9	16
C601100135	---	M16	125	75	15,7	25	9	16
C601100140	---	M16	150	100	15,7	25	9	16
C601100145	---	M16	160	100	15,7	25	9	16
C601100150	---	M16	170	100	15,7	25	9	16
C601100155	---	M16	200	125	15,7	25	9	16
C601100160	---	M16	230	150	15,7	25	9	16
C601100165	---	M16	250	150	15,7	25	9	16

Codice	€	D	L (mm)	B (mm)	A (mm)	T (mm)	H (mm)	Cava (mm)
C601100170	---	M18	80	55	17,7	28	10	18
C601100175	---	M18	100	65	17,7	28	10	18
C601100180	---	M18	125	85	17,7	28	10	18
C601100185	---	M18	150	100	17,7	28	10	18
C601100190	---	M18	170	100	17,7	28	10	18
C601100195	---	M18	200	125	17,7	28	10	18
C601100200	---	M18	230	150	17,7	28	10	18
C601100205	---	M20	80	55	19,7	32	12	20
C601100210	---	M20	100	63	19,7	32	12	20
C601100215	---	M20	125	85	19,7	32	12	20
C601100220	---	M20	150	100	19,7	32	12	20
C601100225	---	M20	160	110	19,7	32	12	20
C601100230	---	M20	170	100	19,7	32	12	20
C601100235	---	M20	200	125	19,7	32	12	20
C601100240	---	M20	230	150	19,7	32	12	20
C601100245	---	M20	315	190	19,7	32	12	20
C601100250	---	M22	80	55	21,7	35	14	22
C601100255	---	M22	100	63	21,7	35	14	22
C601100260	---	M22	125	85	21,7	35	14	22
C601100265	---	M22	150	100	21,7	35	14	22
C601100270	---	M22	170	100	21,7	35	14	22
C601100275	---	M22	200	125	21,7	35	14	22
C601100280	---	M22	230	150	21,7	35	14	22
C601100285	---	M24	80	55	23,7	40	16	24
C601100290	---	M24	100	70	23,7	40	16	24
C601100295	---	M24	125	85	23,7	40	16	24
C601100300	---	M24	150	100	23,7	40	16	24
C601100305	---	M24	160	110	23,7	40	16	24
C601100310	---	M24	170	100	23,7	40	16	24
C601100315	---	M24	200	125	23,7	40	16	24
C601100320	---	M24	230	150	23,7	40	16	24
C601100325	---	M24	250	150	23,7	40	16	24



Vite per cave a T testa maggiorata



Vite per cave a T con testa maggiorata in acciaio 42CrMoS4, **classe 10.9**, filettatura rollata.



Codice	€	D	L (mm)	B (mm)	A (mm)	T (mm)	H (mm)	Cava (mm)
C601250005	---	M16	93	55	15,7	28	12	16
C601250010	---	M16	120	75	15,7	28	12	16
C601250015	---	M16	150	100	15,7	28	12	16
C601250020	---	M16	200	125	15,7	28	12	16
C601250025	---	M16	225	160	15,7	28	12	16
C601250030	---	M16	250	160	15,7	28	12	16
C601250035	---	M16	300	180	15,7	28	12	16
C601250040	---	M18	120	75	17,7	35	14	18
C601250045	---	M18	150	100	17,7	35	14	18
C601250050	---	M18	200	125	17,7	35	14	18
C601250055	---	M18	225	150	17,7	35	14	18
C601250060	---	M18	250	150	17,7	35	14	18
C601250065	---	M18	300	190	17,7	35	14	18

Codice	€	D	L (mm)	B (mm)	A (mm)	T (mm)	H (mm)	Cava (mm)
C601250070	---	M20	120	75	19,7	40	16	20
C601250075	---	M20	150	100	19,7	40	16	20
C601250080	---	M20	200	125	19,7	40	16	20
C601250085	---	M20	225	150	19,7	40	16	20
C601250090	---	M20	250	150	19,7	40	16	20
C601250095	---	M20	300	190	19,7	40	16	20
C601250100	---	M24	120	75	23,7	44	20	24
C601250105	---	M24	150	100	23,7	44	20	24
C601250110	---	M24	200	125	23,7	44	20	24
C601250115	---	M24	225	150	23,7	44	20	24
C601250120	---	M24	250	150	23,7	44	20	24
C601250125	---	M24	300	190	23,7	44	20	24