

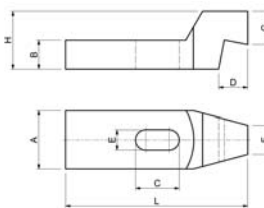


Staffe a gomito

Staffe a gomito, in esecuzione fresata dal pieno, in acciaio da bonifica verniciato, resistenza >700 N/mm², **DIN 6316**.



DIN 6316



Codice	€	A (mm)	B (mm)	L (mm)	C (mm)	E (mm)	D (mm)	F (mm)	G (mm)	H (mm)	Viti (M)
C600700005	---	40	20	125	30	14	20	20	23	40	12-14
C600700010	---	50	25	160	40	18	25	25	28	50	16-18
C600700015	---	50	25	200	60	18	25	25	28	50	16-18
C600700020	---	60	30	160	40	22	30	30	35	60	20-22

Codice	€	A (mm)	B (mm)	L (mm)	C (mm)	E (mm)	D (mm)	F (mm)	G (mm)	H (mm)	Viti (M)
C600700025	---	60	30	200	60	22	30	30	35	60	20-22
C600700030	---	70	35	200	50	26	35	35	38	70	24
C600700035	---	70	35	250	75	26	35	35	38	70	24

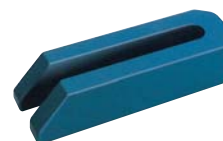
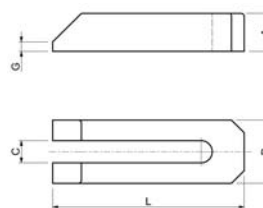


Staffe a forcella con smusso

Staffe a forcella con smusso, in esecuzione fresata dal pieno, in acciaio da bonifica verniciato, resistenza >600 N/mm², **DIN 6315B**.



DIN 6315B



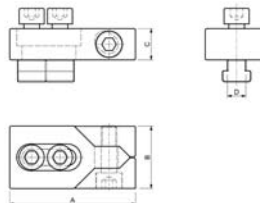
Codice	€	A (mm)	B (mm)	L (mm)	C (mm)	G (mm)	Viti (M)
C600750005	---	12	20	60	7	3	6
C600750010	---	15	25	80	9	4	8
C600750015	---	20	30	100	11	5	10
C600750020	---	25	40	125	14	6	12-14
C600750025	---	25	40	160	14	6	12-14
C600750030	---	25	40	200	14	6	12-14
C600750035	---	30	50	160	18	8	16-18
C600750040	---	30	50	200	18	8	16-18
C600750045	---	40	50	250	18	10	16-18
C600750050	---	40	50	200	22	10	20-22

Codice	€	A (mm)	B (mm)	L (mm)	C (mm)	G (mm)	Viti (M)
C600750055	---	40	60	250	22	10	20-22
C600750060	---	40	60	315	22	10	20-22
C600750065	---	40	70	200	26	10	24
C600750070	---	40	70	250	26	10	24
C600750075	---	40	70	315	26	10	24
C600750080	---	50	80	250	34	12	27-30
C600750085	---	50	80	315	34	12	27-30
C600750090	---	50	80	400	34	12	27-30
C600750095	---	60	100	400	40	12	36
C600750100	---	60	100	600	40	12	36



Morsetti laterali

Morsetti laterali, in acciaio da bonifica verniciato, a cuneo per permettere il bloccaggio contemporaneo del pezzo in senso verticale ed orizzontale, **forniti in coppia, Nr. 6490**.



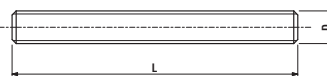
Codice	€	A (mm)	B (mm)	C (mm)	D (mm)	Cava (mm)
C600800005	---	80	40	20	11,7	12
C600800010	---	80	40	20	13,7	14
C600800015	---	100	50	25	15,7	16
C600800020	---	100	50	25	17,7	18
C600800025	---	100	50	25	19,7	20

Codice	€	A (mm)	B (mm)	C (mm)	D (mm)	Cava (mm)
C600800030	---	140	78	30	21,7	22
C600800035	---	140	78	30	23,7	24
C600800040	---	140	78	30	27,7	28
C600800045	---	140	78	30	29,7	30



Barra filettata

Barra filettata, in acciaio 42CrMoS4, **classe 10.9**, filettatura rollata.



Codice	€	D	L (mm)
C601050060	---	M6	1000
C601050080	---	M8	1000
C601050100	---	M10	1000
C601050120	---	M12	1000
C601050140	---	M14	1000
C601050160	---	M16	1000
C601050180	---	M18	1000
C601050200	---	M20	1000

Codice	€	D	L (mm)
C601050220	---	M22	1000
C601050240	---	M24	1000
C601050270	---	M27	1000
C601050300	---	M30	1000
C601050360	---	M36	1000
C601050420	---	M42	1000
C601050480	---	M48	1000